

Accessory for XS35 series supports second hard disk drive

With this accessory you can install a second 2.5" hard disk in your XS35 series PC. Please note, that the bay for the optical drive will be occupied then.

Feature Highlight

Scope of delivery

- Hard disk rack
- Hard disk adapter card
- Screws (6x)
- Standoff screws (2x)

Compatibility

- Compatible with Shuttle Ultra-Small-Form-Factor-PCs XS35 series
- Supports 2.5" hard disk drives (63.5mm) with Serial ATA interface, 5400 rpm and 9.5mm height

Product PHD2 (-U)

Order No: POE-PHD2



Images for illustration purposes only.

Shuttle Accessory **PHD2**



Accessory PHD2 with hard disk.
The hard disk is not included.

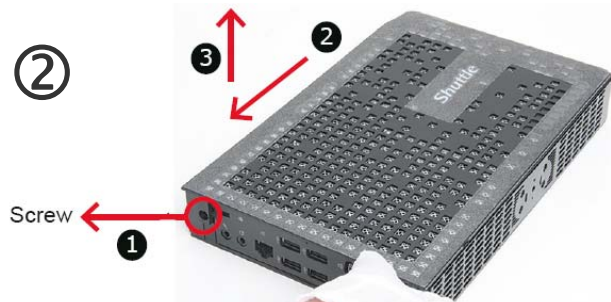


Shuttle XS35 completely

Accessory PHD2 – Installation Guide



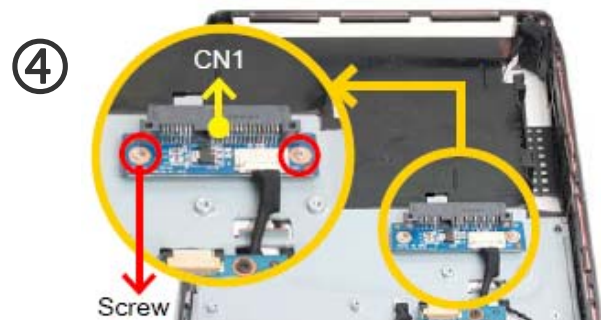
Before removing the system casing, in the interests of safety please first turn off your computer and unplug it from the power supply.



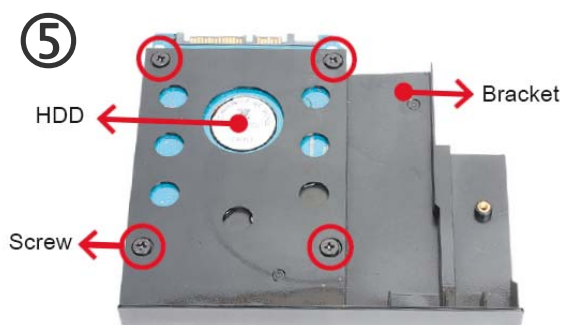
Remove the two covers which are on both sides of your XS35.



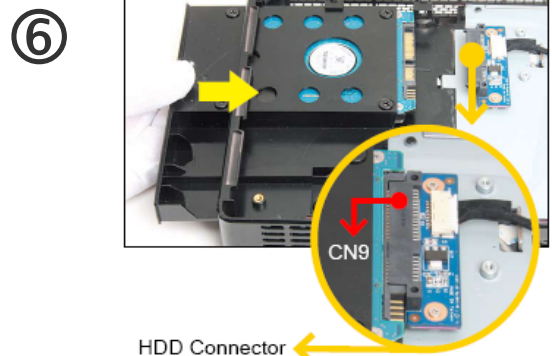
Tighten the two nuts first just as shown.
Two Nuts



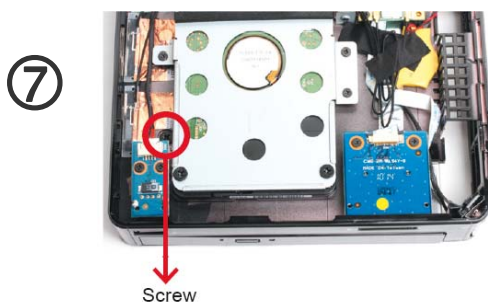
As shown, install the HDD Adapter Card with two screws and connect the cable to CN1.



Mount HDD into the bracket with screws.



As shown, install the HDD & bracket in the chassis and push it towards the direction as indicated by the yellow arrow to connect the HDD connector (CN9).



Turn your XS35 upside down and tighten the hard disk and bracket with one screw.



Replace system casing and fasten the cover screw in place.